

2024 annual report to the Community

Berri Primary School

Berri Primary School number: 532

Partnership: Berri & Barmera



School principal:

Brenda Pfitzner

Signature

Date of endorsement:

18/02/2025



Government
of South Australia
Department for Education

Context Statement

Berri Primary School caters for students from R-6. At the time of this report, the enrolment in 2024 is 265. Berri Primary School is classified as Category 2 on the Department for Education Index of Educational Disadvantage. At the time of this report, the school population includes 18% Aboriginal students, 8% students with disabilities, 2% children/young people in care. Further information about the school is available on the school's website (including its context statement), as well as the My School website.

Data Source: Department for Education data holdings from Mid census captured in AUGUST 2024.

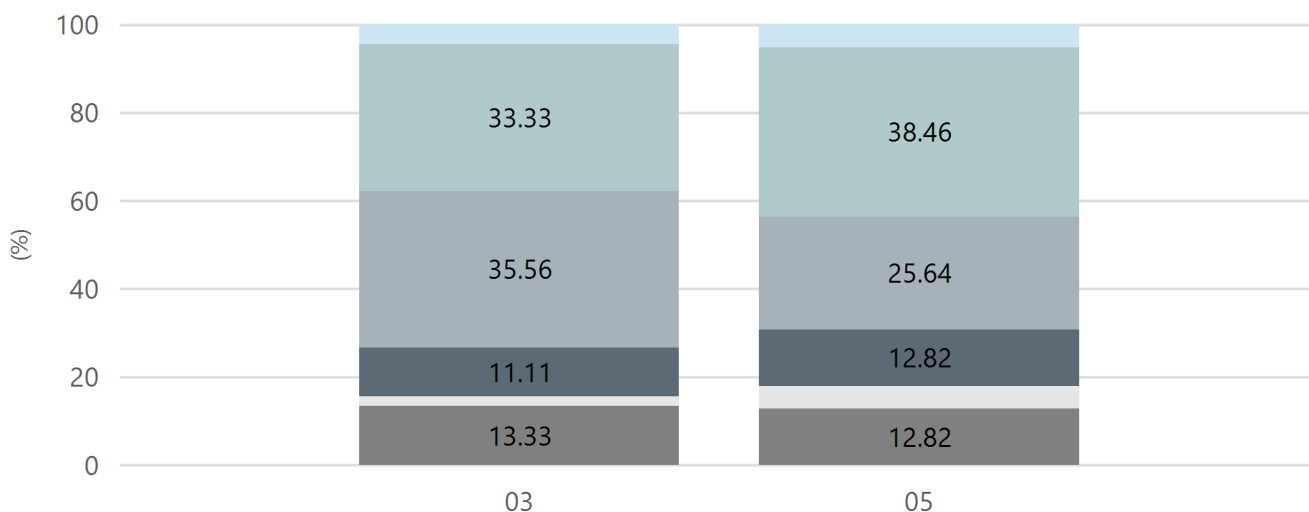
Governing Council Report

Performance Summary

NAPLAN Proficiency

In 2023 the Australian Curriculum, Assessment and Reporting Authority (ACARA) - a Commonwealth Independent statutory authority - announced changes to NAPLAN performance reporting. The new approach replaces the previous numerical NAPLAN bands and the national minimum standard.

Numeracy

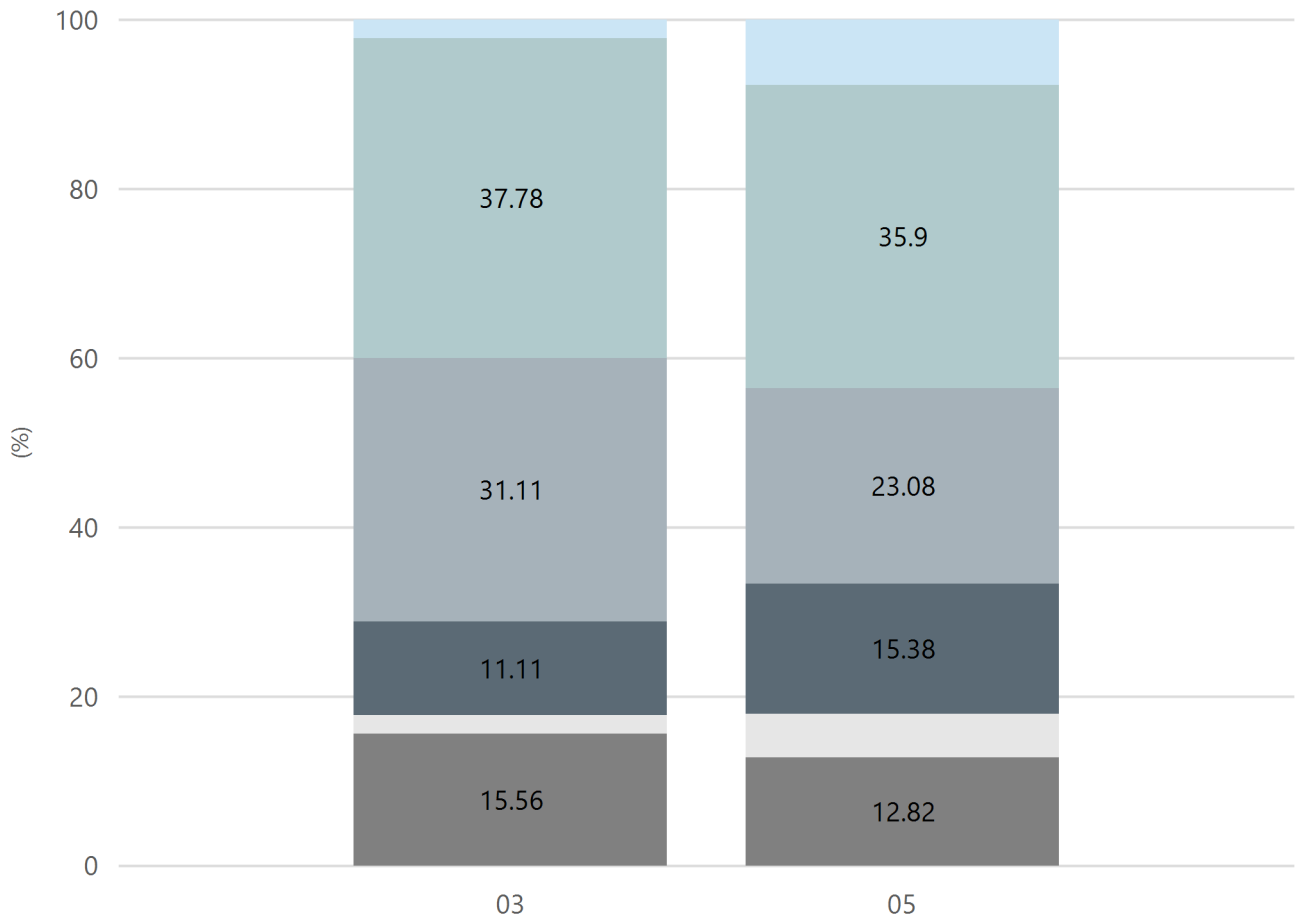


Exceeding Strong Developing Needs Additional Support Absent/Withdrawn Exempt

Year Level	03	05
Exceeding	2	2
Strong	15	15
Developing	16	10
Needs Additional Support	5	5
Absent/Withdrawn	1	2
Exempt	6	5
Total	45	39

Data Source: Department for Education Assessment Data Holdings, 2024. If there are less than 6 students who sat NAPLAN in a school, no information will be shown. If a year level has less than 6 students, that year level will not be shown in NAPLAN results.

Reading

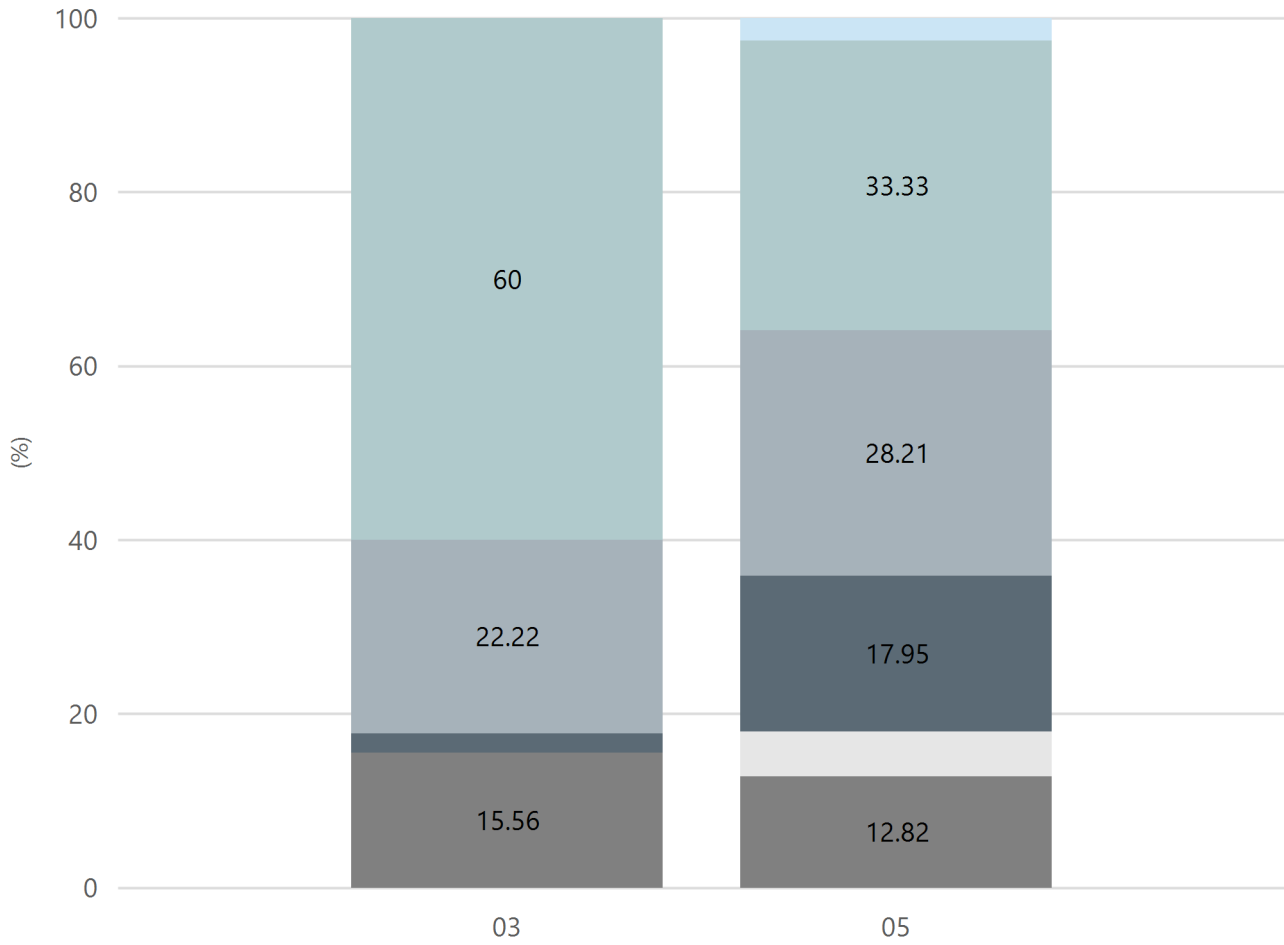


Exceeding Strong Developing Needs Additional Support Absent/Withdrawn Exempt

Year Level	03	05
Exceeding	1	3
Strong	17	14
Developing	14	9
Needs Additional Support	5	6
Absent/Withdrawn	1	2
Exempt	7	5
Total	45	39

Data Source: Department for Education Assessment Data Holdings, 2024. If there are less than 6 students who sat NAPLAN in a school, no information will be shown. If a year level has less than 6 students, that year level will not be shown in NAPLAN results.

Writing

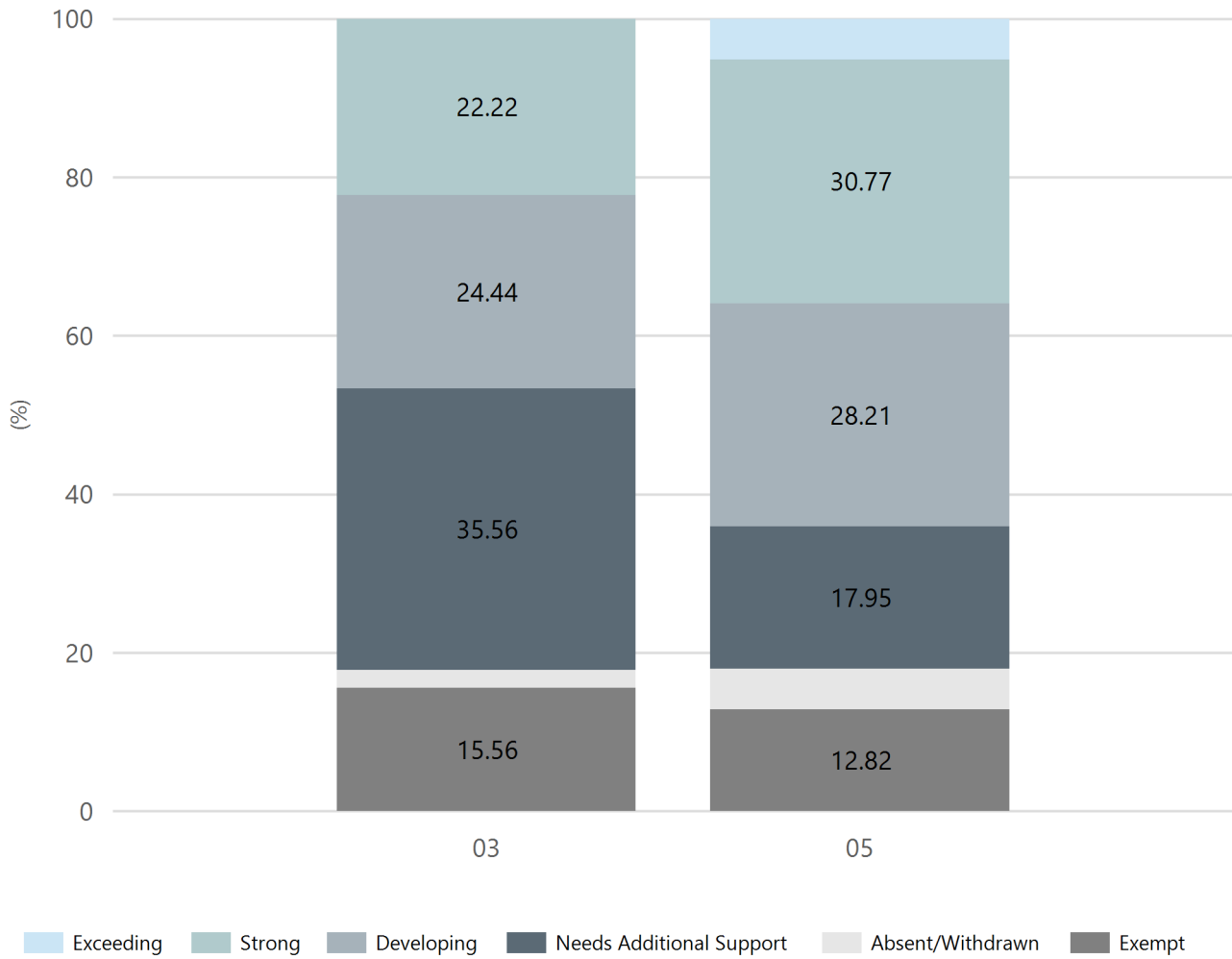


Exceeding Strong Developing Needs Additional Support Absent/Withdrawn Exempt

Year Level	03	05
Exceeding		1
Strong	27	13
Developing	10	11
Needs Additional Support	1	7
Absent/Withdrawn		2
Exempt	7	5
Total	45	39

Data Source: Department for Education Assessment Data Holdings, 2024. If there are less than 6 students who sat NAPLAN in a school, no information will be shown. If a year level has less than 6 students, that year level will not be shown in NAPLAN results.

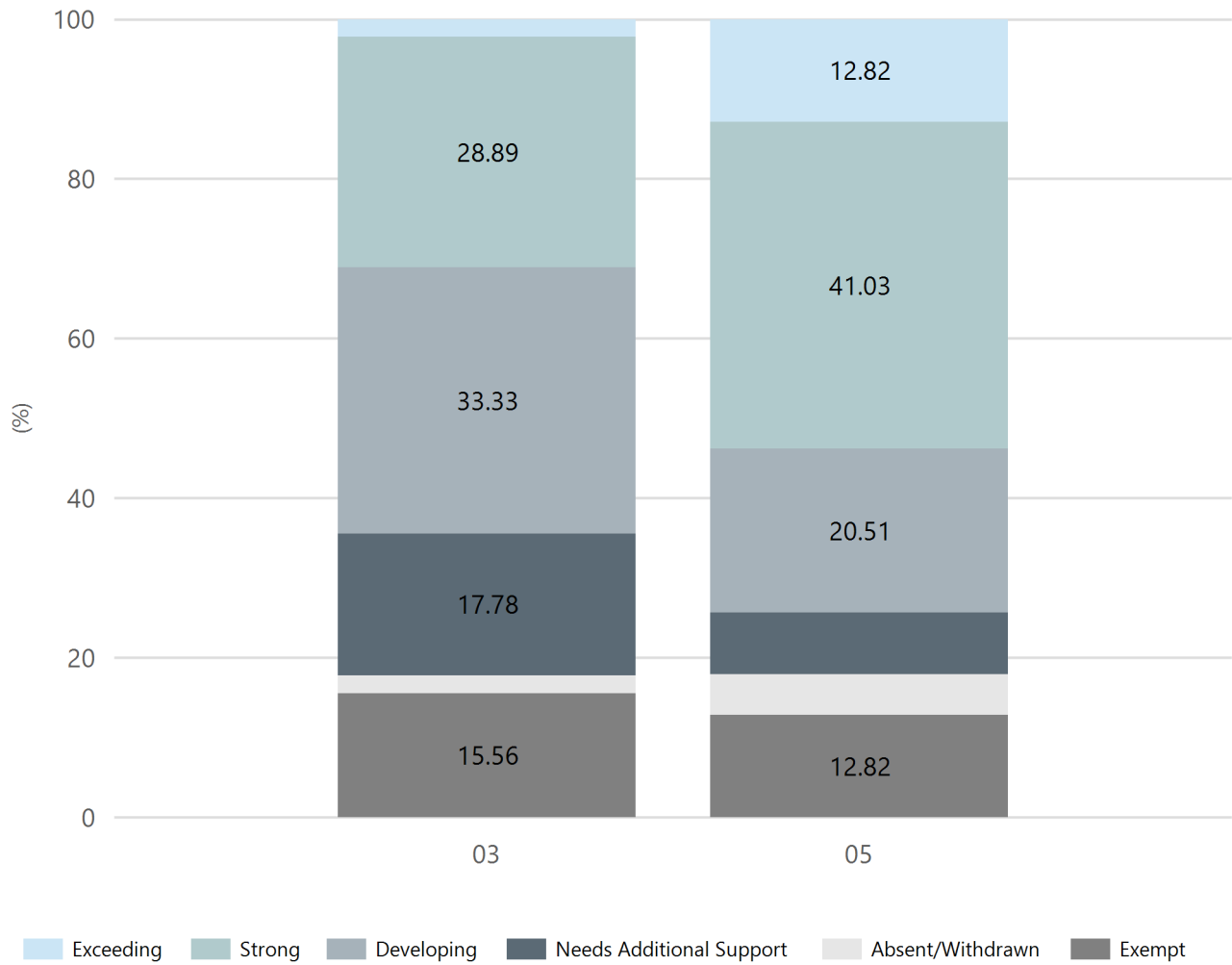
Grammar



Year Level	03	05
Exceeding		2
Strong	10	12
Developing	11	11
Needs Additional Support	16	7
Absent/Withdrawn	1	2
Exempt	7	5
Total	45	39

Data Source: Department for Education Assessment Data Holdings, 2024. If there are less than 6 students who sat NAPLAN in a school, no information will be shown. If a year level has less than 6 students, that year level will not be shown in NAPLAN results.

Spelling

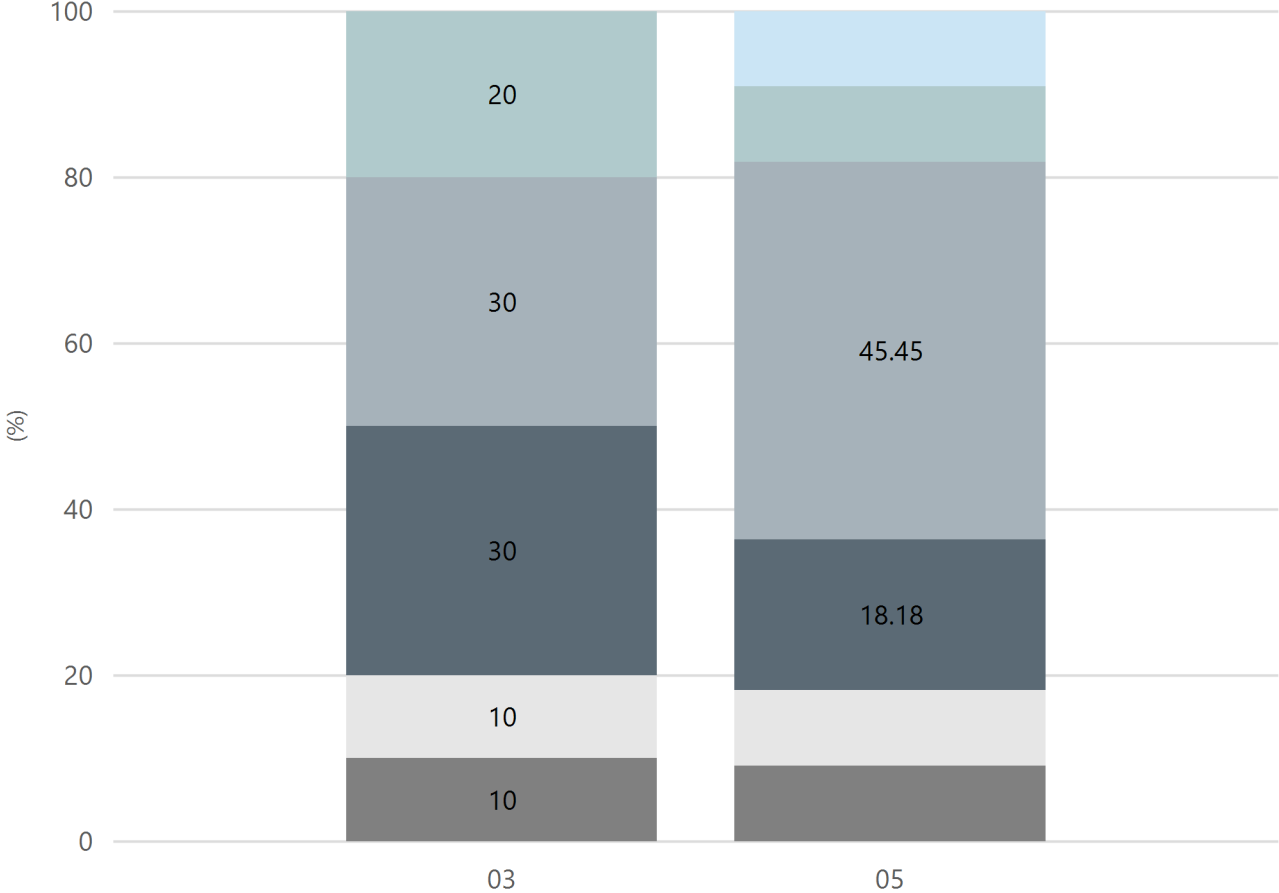


Year Level	03	05
Exceeding	1	5
Strong	13	16
Developing	15	8
Needs Additional Support	8	3
Absent/Withdrawn	1	2
Exempt	7	5
Total	45	39

Data Source: Department for Education Assessment Data Holdings, 2024. If there are less than 6 students who sat NAPLAN in a school, no information will be shown. If a year level has less than 6 students, that year level will not be shown in NAPLAN results.

NAPLAN Proficiency - Aboriginal Learners

Numeracy

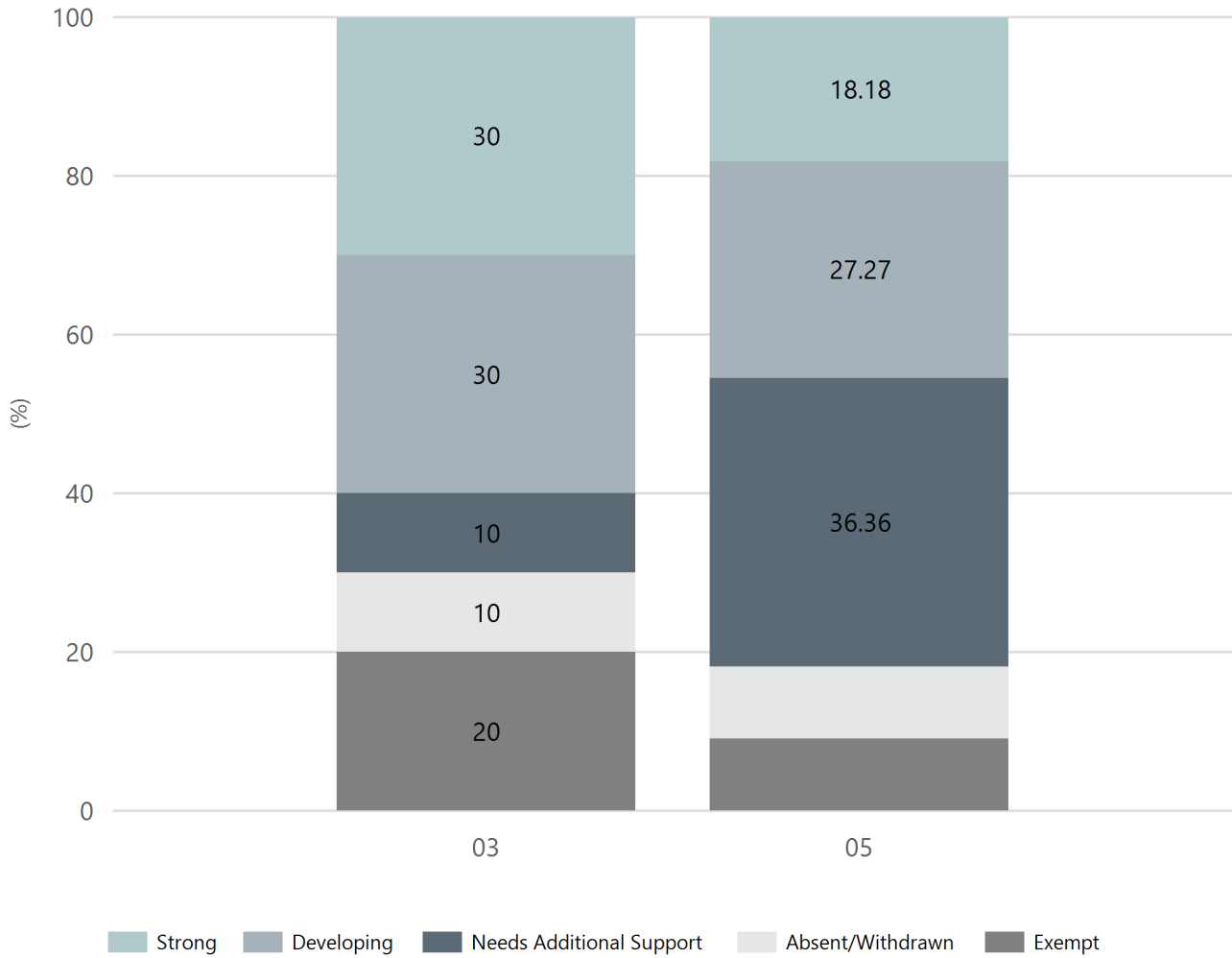


■ Exceeding
 ■ Strong
 ■ Developing
 ■ Needs Additional Support
 ■ Absent/Withdrawn
 ■ Exempt

Year Level	03	05
Exceeding		1
Strong	2	1
Developing	3	5
Needs Additional Support	3	2
Absent/Withdrawn	1	1
Exempt	1	1
Total	10	11

Data Source: Department for Education Assessment Data Holdings, 2024. If there are less than 6 students who sat NAPLAN in a school, no information will be shown. If a year level has less than 6 students, that year level will not be shown in NAPLAN results. Only data for Aboriginal learners is displayed.

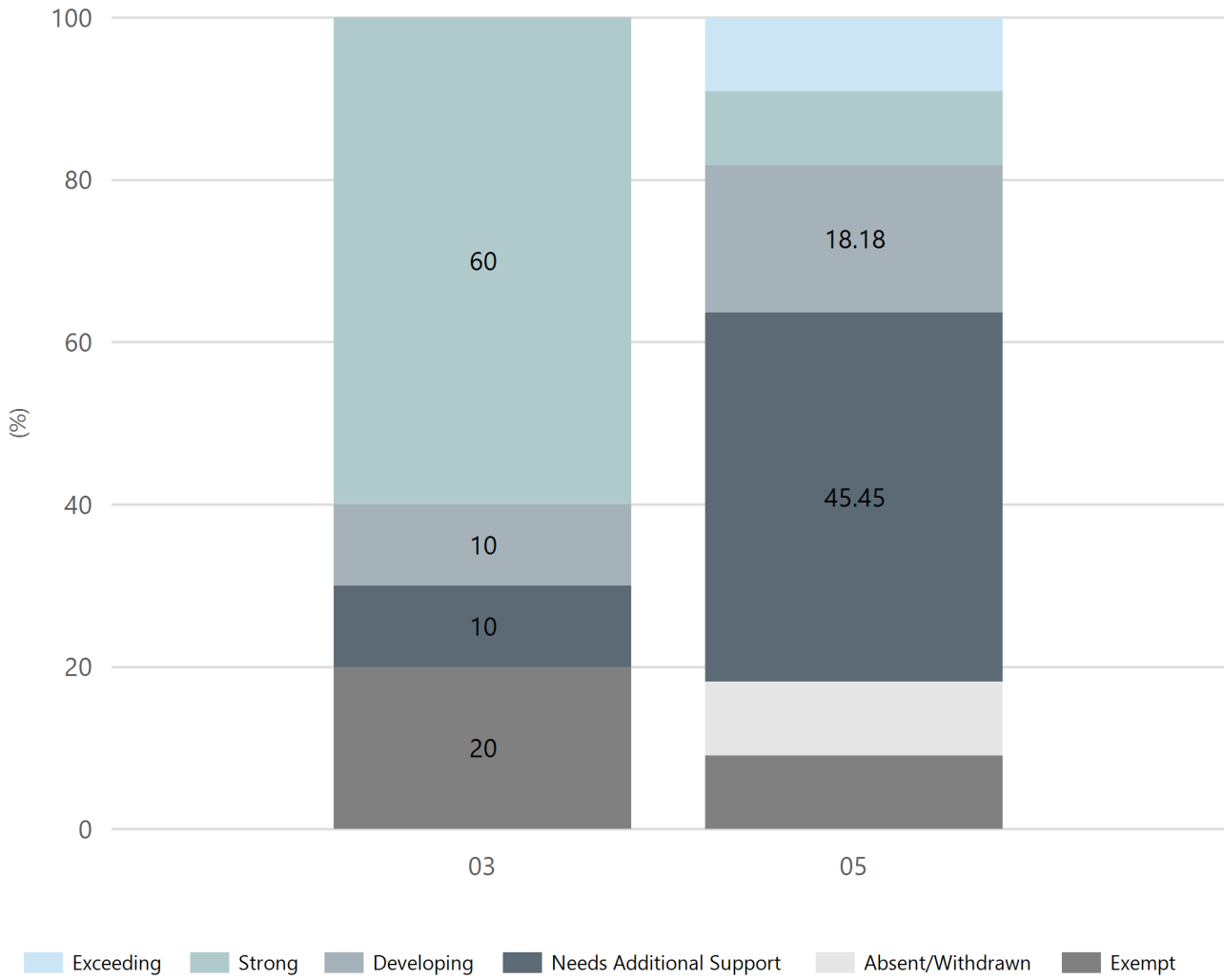
Reading



Year Level	03	05
Strong	3	2
Developing	3	3
Needs Additional Support	1	4
Absent/Withdrawn	1	1
Exempt	2	1
Total	10	11

Data Source: Department for Education Assessment Data Holdings, 2024. If there are less than 6 students who sat NAPLAN in a school, no information will be shown. If a year level has less than 6 students, that year level will not be shown in NAPLAN results. Only data for Aboriginal learners is displayed.

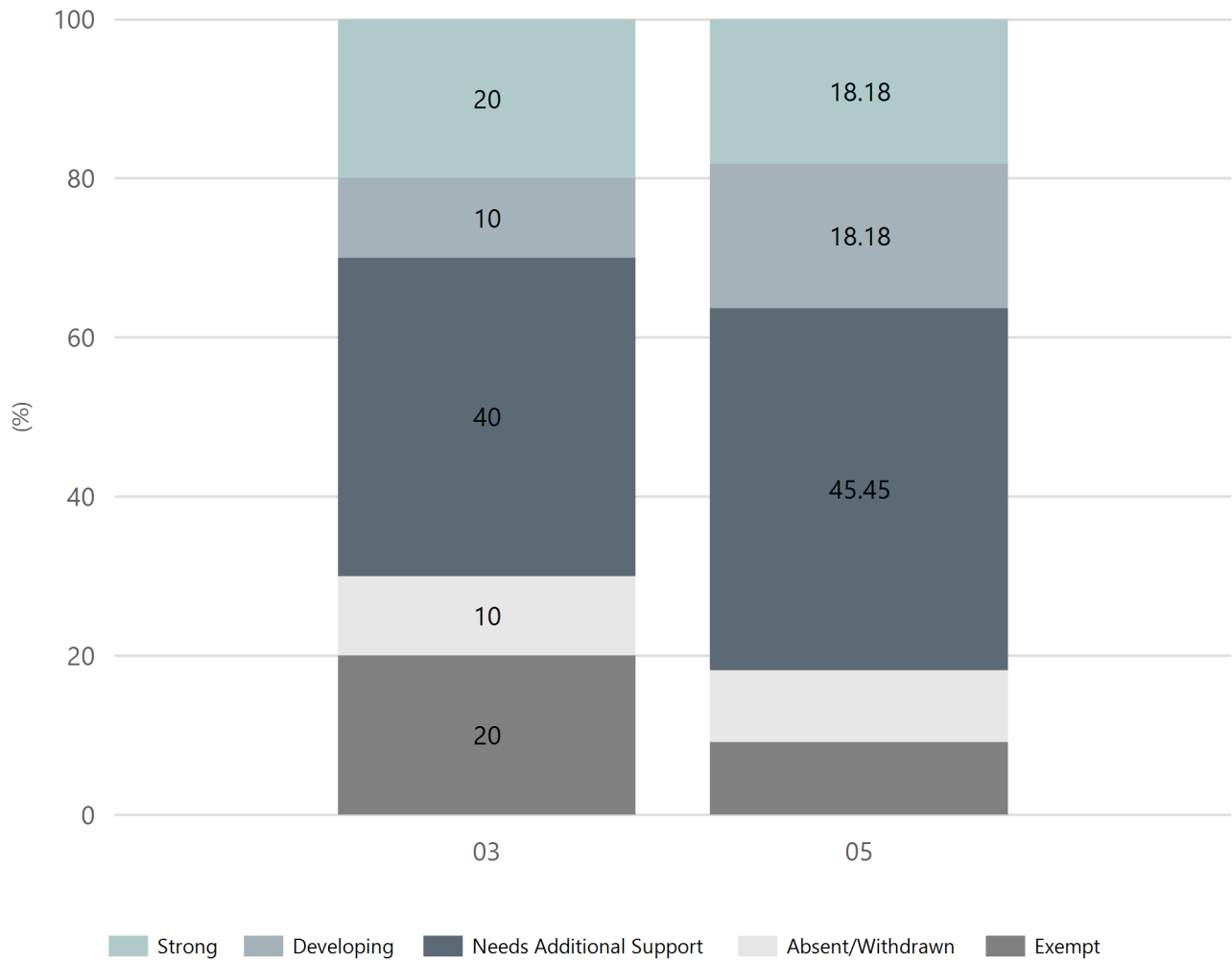
Writing



Year Level	03	05
Exceeding		1
Strong	6	1
Developing	1	2
Needs Additional Support	1	5
Absent/Withdrawn		1
Exempt	2	1
Total	10	11

Data Source: Department for Education Assessment Data Holdings, 2024. If there are less than 6 students who sat NAPLAN in a school, no information will be shown. If a year level has less than 6 students, that year level will not be shown in NAPLAN results. Only data for Aboriginal learners is displayed.

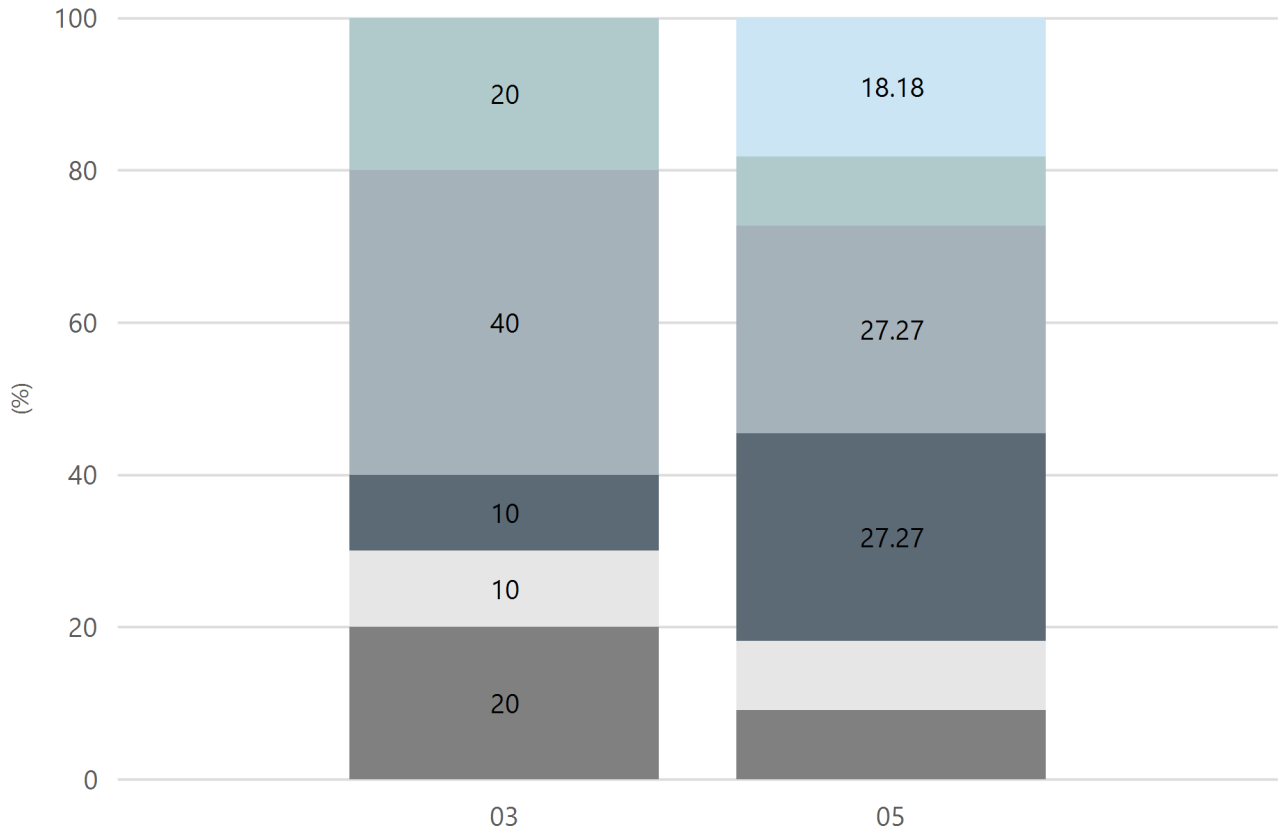
Grammar



Year Level	03	05
Strong	2	2
Developing	1	2
Needs Additional Support	4	5
Absent/Withdrawn	1	1
Exempt	2	1
Total	10	11

Data Source: Department for Education Assessment Data Holdings, 2024. If there are less than 6 students who sat NAPLAN in a school, no information will be shown. If a year level has less than 6 students, that year level will not be shown in NAPLAN results. Only data for Aboriginal learners is displayed.

Spelling



■ Exceeding
 ■ Strong
 ■ Developing
 ■ Needs Additional Support
 ■ Absent/Withdrawn
 ■ Exempt

Year Level	03	05
Exceeding		2
Strong	2	1
Developing	4	3
Needs Additional Support	1	3
Absent/Withdrawn	1	1
Exempt	2	1
Total	10	11

Data Source: Department for Education Assessment Data Holdings, 2024. If there are less than 6 students who sat NAPLAN in a school, no information will be shown. If a year level has less than 6 students, that year level will not be shown in NAPLAN results. Only data for Aboriginal learners is displayed.

School Attendance

Year Level	2022	2023	2024
Reception	76.9%	82.2%	78.6%
Year 01	84.0%	82.7%	78.5%
Year 02	81.8%	89.2%	81.6%
Year 03	84.5%	85.1%	82.9%
Year 04	86.4%	85.8%	87.5%
Year 05	84.3%	86.7%	84.9%
Year 06	81.8%	86.2%	88.7%
Primary Other	89.4%	86.1%	84.3%
Total	82.9%	85.5%	83.1%

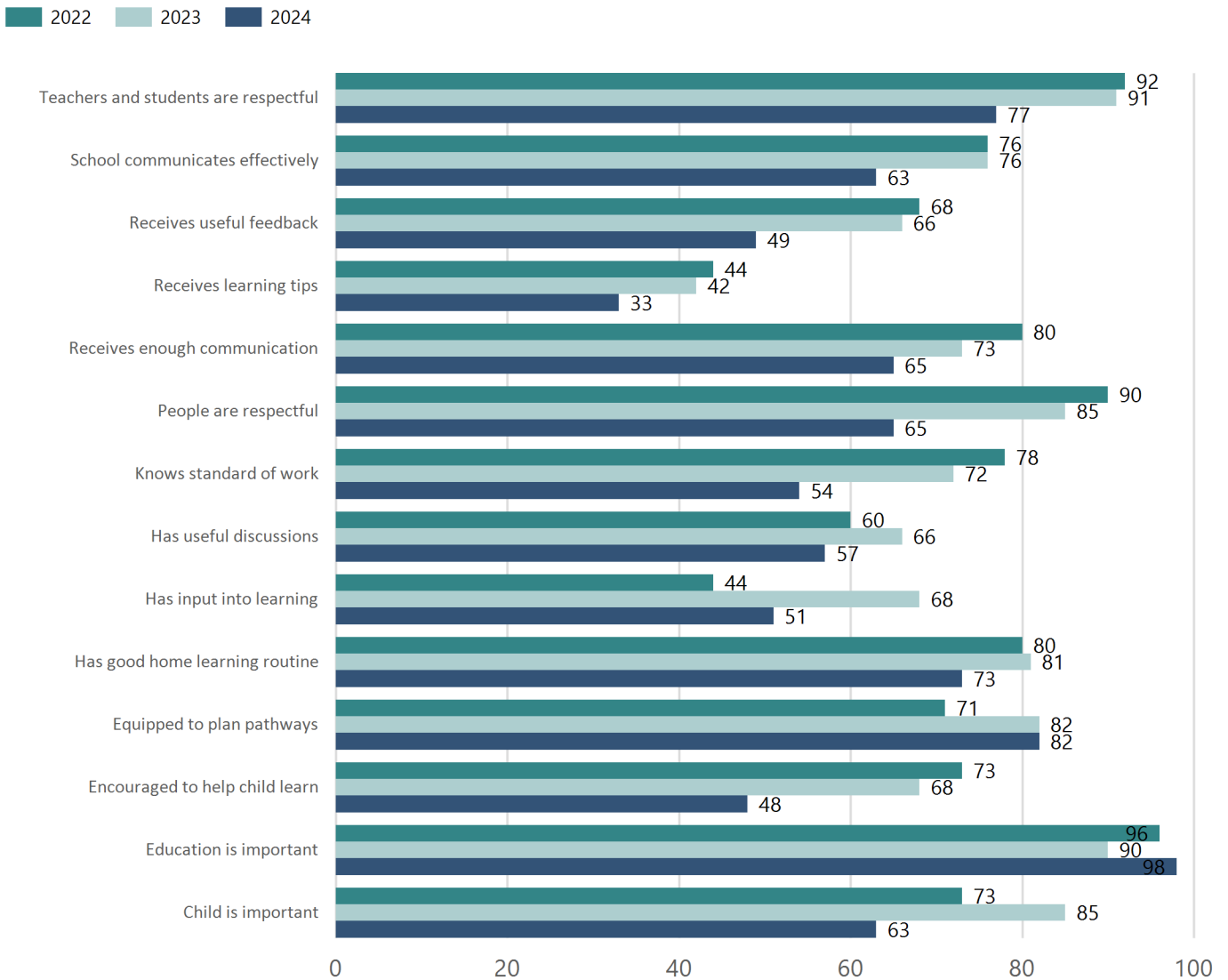
Data Source: Department for Education Attendance Data, Semester 1 Report 2024. A blank cell indicates there were no students enrolled. 'Primary Other' includes students enrolled in specialised education options. 'Secondary Other' includes students who have already spent a year at Year 12 and elected to undertake further study at Year 12.

Attendance Comment

In South Australia, all children and young people must be in school from 6 years to 16 years old. They must attend a government or non-government school full time. From age 16 to 17 however, young people must attend school or an approved learning program (such as an apprenticeship, traineeship, accredited course or university). Schools and parents must encourage and support students to come to school every day. Parents and caregivers must make sure their child is enrolled in a school, and attends school all day and everyday it is open, unless a child is sick or has an approved exemption. Teachers and leaders actively follow up when a student misses school, including recording all absences and non-attendance. All schools in South Australia have local attendance procedures governed under the Education and Children's Services Regulations 2020.

School Parent Opinion Survey Results

Proportion of agree/strongly agree response(%)



Data Source: 2024 Department for Education Parent Opinions Survey, Term 3 2024.

Intended Destination

Leave Reason	Number	%
IS - INTERSTATE	4	19.0%
NG - ATTENDING NON-GOV SCHOOL IN SA	1	5.0%
NS - LEFT SA FOR NSW	3	14.0%
TG - TRANSFERRED TO SA GOVERNMENT SCHOOL	9	43.0%
U - UNKNOWN	3	14.0%
VI - LEFT SA FOR VIC	1	5.0%

Data Source: Department for Education Destination Data Report, 2024. Data extract term 3 2024. Data shows recorded destinations for students that left the school in the previous year. Data is uploaded by schools in term 3 and may not reflect final or total figures at time of report creation.

Highest Qualifications held by the teaching workforce and workforce composition

All teachers at this school are qualified and registered with the SA Teachers Registration Board.

Qualification Level	Number of Qualifications
Bachelor's degrees or Diplomas	20
Postgraduate Qualifications	2

Data Source: Data extracted from Mandatory Workforce Information Collections as on the last pay date of June 2024. As self-reported by staff in the system.

Please note: Data includes staff who are Actively employed and on extended paid leave. Please note only the highest qualification of the Teaching staff is reported. Excludes any number of other certifications earned.

Workforce composition including indigenous staff

	Teaching Staff		Non-Teaching Staff	
	Indigenous	Non-Indigenous	Indigenous	Non-Indigenous
Full-Time Equivalents	0.0	22.3	1.2	10.0
Persons	0.0	23.0	2.0	14.0

Data Source: Data extracted from Mandatory Workforce Information Collection as on the last pay date of June 2024.

Please note: Data includes staff who are actively employed and on extended paid leave. "Indigenous category" is self-reported by staff in the system.

Financial Statement

Funding Source	Amount
Grants: State	
Grants: Commonwealth	
Parent Contributions	
Fund Raising	
Other	

Data Source: School supplied data.